

# KOLOR KUT FUEL FINDING PASTE AND

## Introduction.

Kolor Kut is known as a market leader in the manufacture of indicator pastes for the petroleum sector, and these pastes are used throughout the world to assist operators in the accurate detection of fuel and water levels when dipping fuel storage tanks. Fuelling Components now holds in stock the following Kolor Kut indicator pastes which are suitable for use with a wide range of hydrocarbon fuels including Gasoline, Diesel, Naphtha, Kerosene, Gas Oil, Crude Oil, Jet Fuel and Avgas.

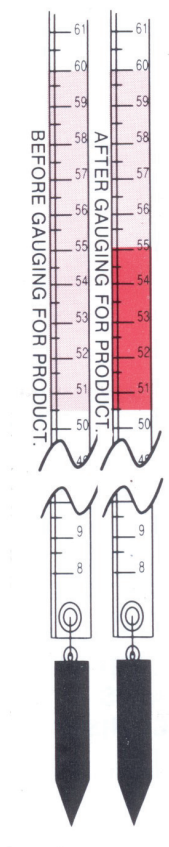
## Fuel Finding Paste.



Kolor Kut Fuel Finding (Ullage) paste is light pink in colour and turns deep red upon contact with most hydrocarbon fuels. It gives a clear level reading on the dip rod or tape, even when evaporation at the interface would normally cause distortion of the reading. Kolor Kut Fuel Finding Paste is supplied in 2.25 oz. tubs only.

## How to Order.

Quote Part Number:  
 GTP-1322k



## Water Finding Paste.



Kolor Kut Water Finding paste is golden brown in colour and turns bright red upon contact with water. This paste will successfully gauge the water level interface in all hydrocarbon fuels. It is also commonly used to detect the presence of free water in the bottom of aviation fuel samples. Kolor Kut Water Finding Paste is supplied in 3 oz. tubes for ease of handling.

## How to Order.

Quote Part Number:  
 GTP-3980-12.

