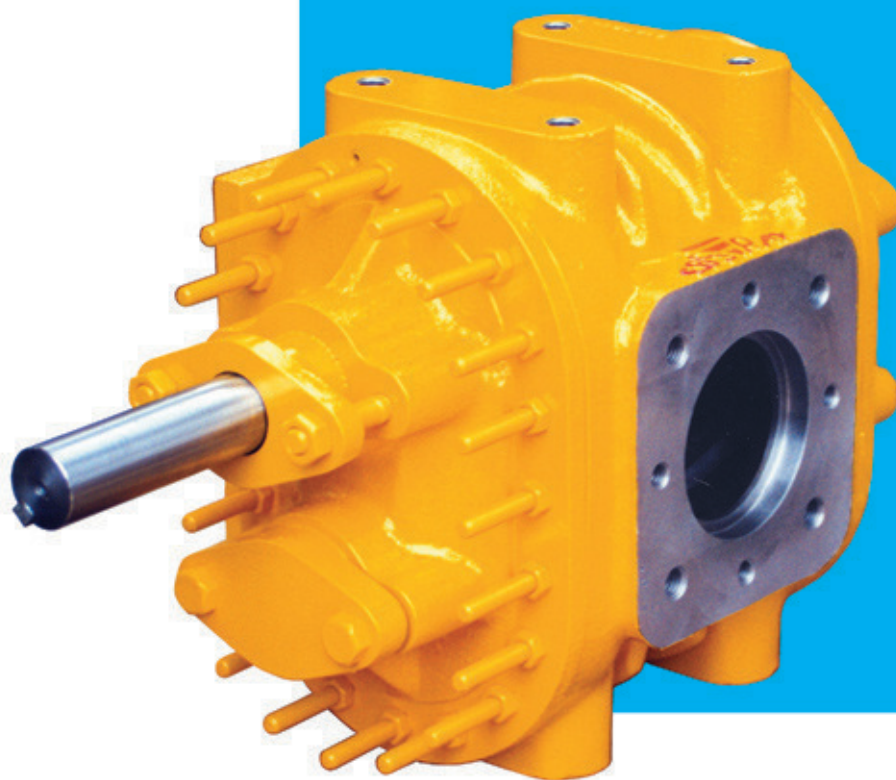


EBSRAY PUMPS



G Series
All Models
.....for Bitumen Applications



Quality
Endorsed
Company

ISO 9001
Lic 3332
Standards Australia

Head Office and Works



G Series - All Models



Road Sprayer equipped with EBSRAY G Series Pump & EBSRAY SB Series Spraybar



Road Sprayer in action - note even distribution from G Series pump.



G Series Pumps provide high volume for rapid bitumen application.



Fixed installation EBSRAY model G25 pump in Bitumen Blend Plant.

The EBSRAY G SERIES HELICAL GEAR PUMPS are designed and precision built for high flow/high pressure transfer of Bitumen and Bitumen Products in mobile and fixed applications. These pumps handle a range of product viscosities and temperatures and are available in different sizes/capacities.

Specifications

Max Flows to 1,875 L/min
Max Differential pressures to 2,000 kPa
Viscosity to 1,000,000 cSt
Temperatures to 280°C
Porting Special High Flow Design
Refer Dimensions for details

Features

- ✓ Hardened Helical Cut Gears for extended service life.
- ✓ Internal or External tank mounting.
- ✓ Reversible Rotation.
- ✓ Low maintenance.
- ✓ Extra heavy duty build - excellent service life.
- ✓ Simple design for ease of maintenance.
- ✓ Excellent Self Priming capability.
- ✓ Enlarged inlet porting.
- ✓ Balanced hydraulic axial thrust.
- ✓ High temperature shaft packing.
- ✓ Pulse-Free Operation
- ✓ Shaft design options available to order

Typical Services / Industries

- Road Spraying/Road Tankers
- Recirculation
- Road and Rail Tanker loading/unloading
- Bulk transfer
- Bitumen blending plants
- Cutback and Emulsion duties

Allied Equipment

Manufactured by EBSRAY includes Spraybars, Internal Gear Pumps, Lobe Pumps, Vane Pumps and Bypass or Pressure Relief Valves

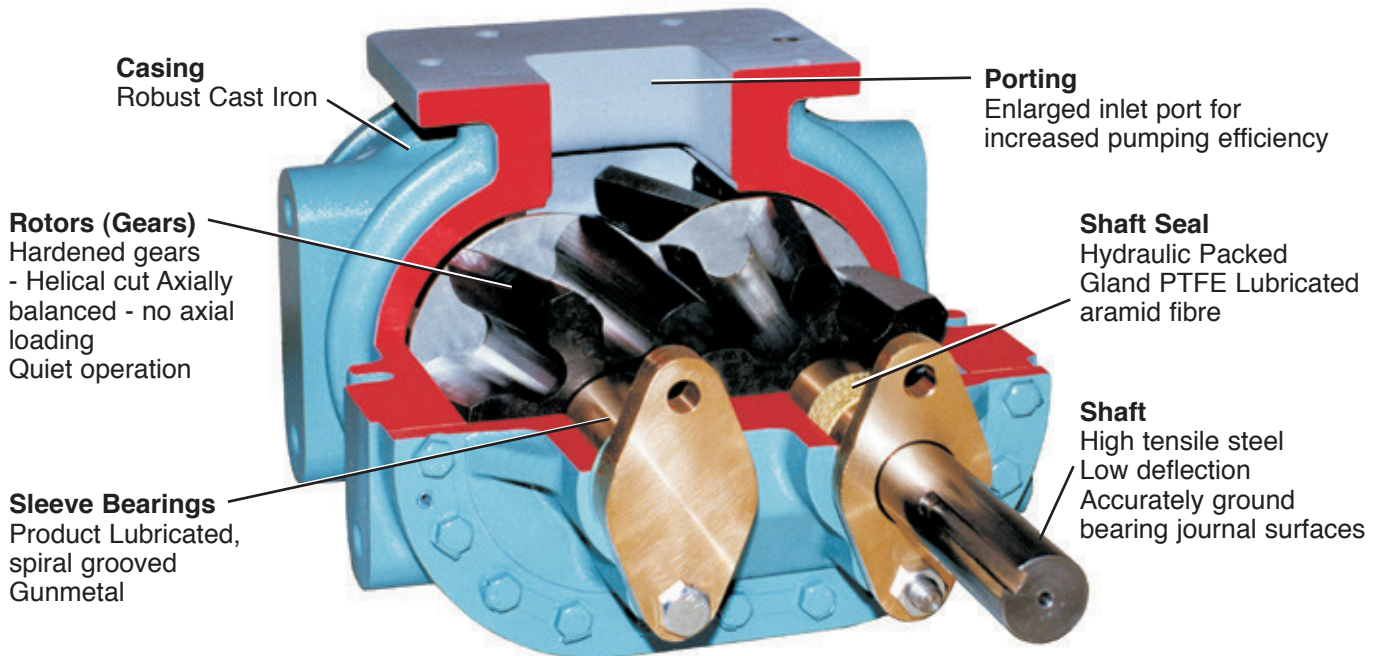
Assured Quality and Performance

EBSRAY's ISO 9001 Quality System assures compliance with high safety and quality standards demanded by the Bitumen Industry.

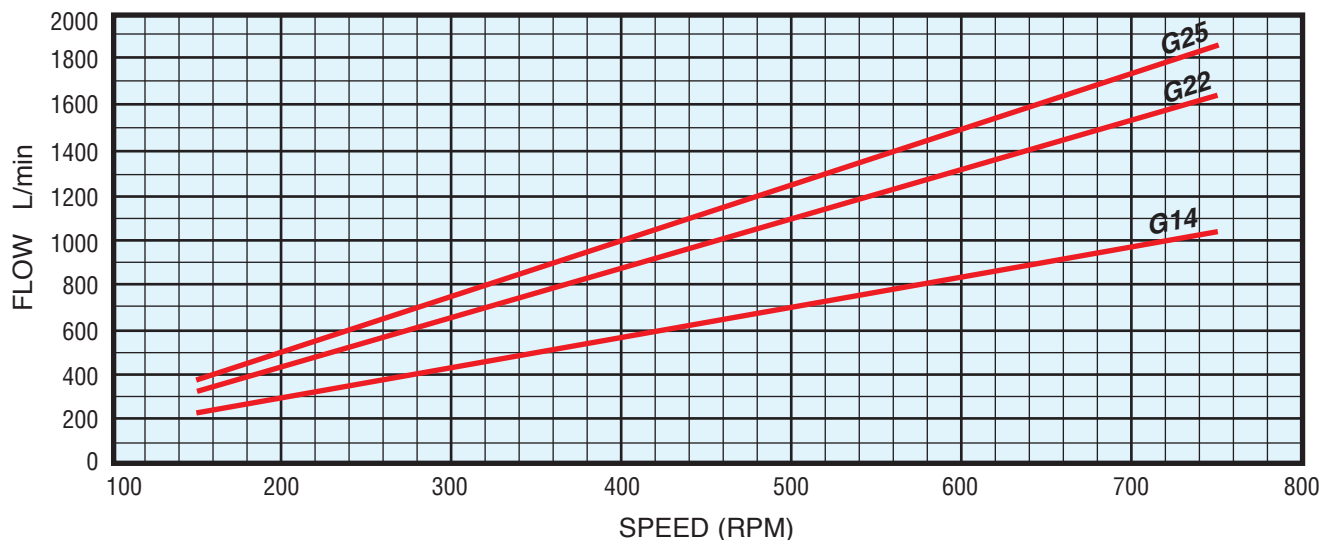
All Ebsray G Series pumps are run tested and inspected prior to dispatch to guarantee pump integrity and performance in accordance with the specifications.

All Ebsray Bitumen Pumps, Pumpsets are quality engineered in Australia

Features



Performance

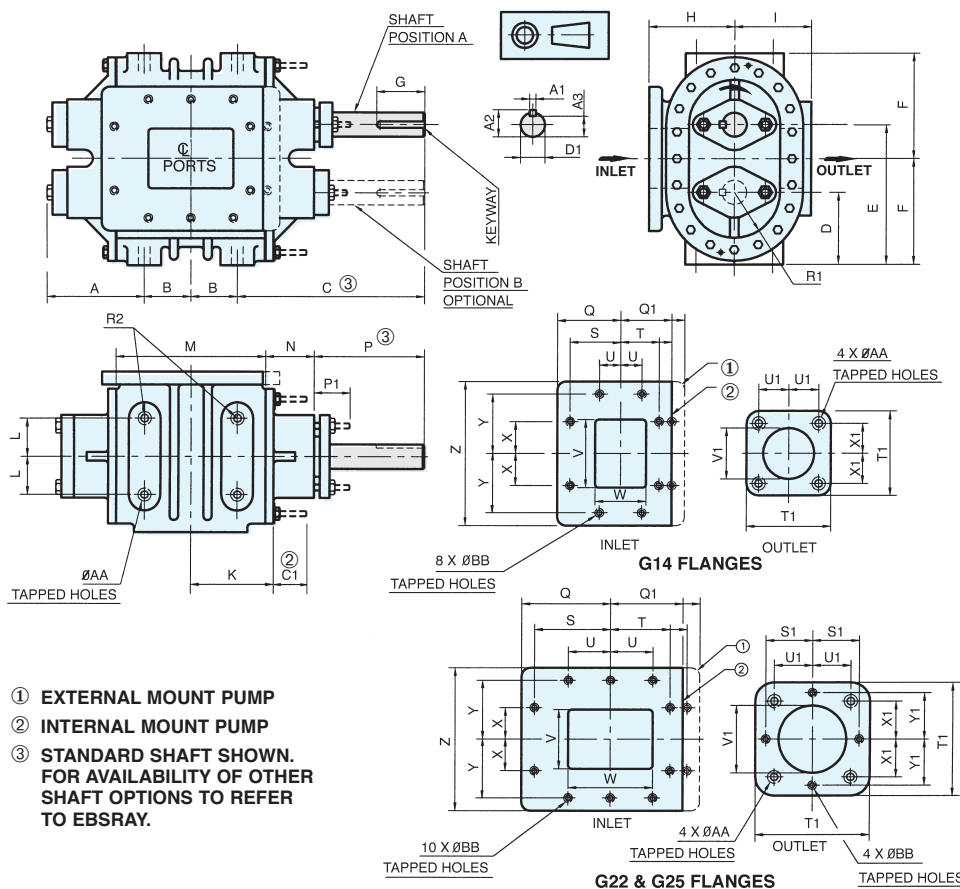


The above graph shows the performance envelope of EBSRAY G Series Helical gear pumps at nominal Differential Pressure = 100 kPa & Viscosity = 100 cSt.
(For actual Performances, refer specific Performance Curves for each Pump Model)

NOTES

1. Pump selection is dependent upon adequate NPSHA (Available) for optimum performance and operation at selected speed.
2. Pump suitability may be affected by Discharge Pressure (Casing pressure), Differential Pressure (Bearing loading), Viscosity of product (Shaft size/torque limitations, sleeve bearing material). Check with EBSRAY or your local Representative as required.
3. For Kinematic Viscosity greater than 20,000 cSt, we recommend conferring directly with EBSRAY or local Representative.
4. Internal pump clearances will affect hydraulic slip. Therefore, slip calculations must be considered for final pump speed determination in every selection. Clearances are determined/affected by: a) pump materials of construction, and/or, b) product temperature, and/or, c) product viscosity, and/or, d) shear sensitivity of product, and/or, e) condition of Pump due to service/wear.

Dimensions



- ① EXTERNAL MOUNT PUMP
- ② INTERNAL MOUNT PUMP
- ③ STANDARD SHAFT SHOWN. FOR AVAILABILITY OF OTHER SHAFT OPTIONS TO REFER TO EBSRAY.

Standard unpacked weight (approx)

Model	Weight
G14	69kg
G22	89kg
G25	94kg

Warranty

All Ebsray manufactured pumps and equipment are warranted for a full 12 months against faulty workmanship and/or materials. Refer to Ebsray or Factory Appointed Representative.

Note

All specifications and illustrations are typical only and subject to revision without notice. Certified data available on request

PUMP MODEL	MAJOR PUMP DIMENSIONS (millimetres)																			
	A	B	C ③	C1 ②	D	E	F	G	H	I	K	L	M	N	P	P1 ③	Q	Q1	S	T
G14 ①	205	44.5	279.4		108	209.6	158.8	90	123.8	108	78.7	57.2	133.4	73	184	54	95.3	95.3	76.2	76.2
G14 ②				50														76.2		57.3
G22 ①	140	69.9	289		108	209.6	158.8	90	127	114.3	114.8	57.2	205.6	73	184	54	134	134	114.3	114.3
G22 ②				50														108		88.9
G25 ①	152.4	69.9	280		108	209.6	158.8	90	127	114.3	124.3	57.2	224.7	73	164.5	54	134	134	114.3	114.3
G25 ②				50														108		88.9

PUMP MODEL	MAJOR PUMP DIMENSIONS (millimetres)																				
	U	V	W	X	Y	Z	S1	T1	U1	ØV1	X1	Y1	A1	A2	A3	R1	R2	ØD1	ØAA	ØBB	
G14 ①	31.8	101.6	76.2	47.6	88.9	216	-	127	45	76.2	45	-	9.5	40.6	31.1	67.8	24	36.5	5/8"	1/2"	
G14 ②																				BSW	BSW
G22 ①	63.5	89	127	47.6	88.9	216	69.9	172	57.2	101.6	57.2	69.9	9.5	40.6	31.1	71	24	36.5	5/8"	1/2"	
G22 ②																				BSW	BSW
G25 ①	63.5	89	127	47.6	88.9	216	69.9	172	57.2	101.6	57.2	69.9	9.5	40.6	31.1	71	24	36.5	5/8"	1/2"	
G25 ②																				BSW	BSW

DISTRIBUTED BY:



Wellington Head Office: 90 Sydney St, PO Box 38 720
Petone, Wellington, Tel: 64 4 568 4933, Fax: 64 4 568 4789
Email: sales@liquip.co.nz Website: www.liquip.co.nz

EBS-RAY PUMPS PTY. LIMITED

ACN 000 061 003

Head Office and Works
628 Pittwater Road
Brookvale NSW 2100 Australia.

Telephone: (61 2) 9905 0234
Fax: (61 2) 9938 3825
Email: nswsales@ebsraypumps.com.au
www.ebsraypumps.com.au

Branch Office Victoria
Phone: (03) 9706 7263
Fax: (03) 9706 7312

Branch Office Queensland
Phone: (07) 3260 7411
Fax: (07) 3260 7422



ISO 9001
Lic 3332
Standards
Australia

Quality
Endorsed
Company

